

# Car Park Products

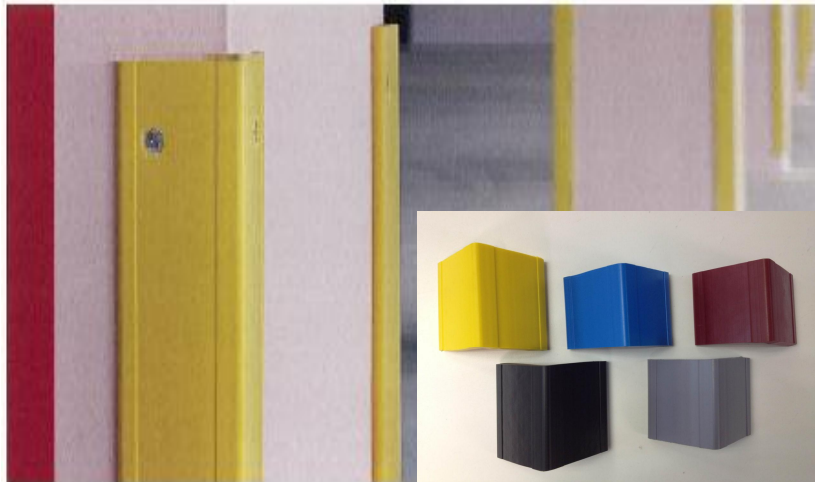
***Speed Hump***



***Wheel Stopper***



***Corner Guard***



***Corner Guard***



# Speed Hump



- “ Model : TSIE-SH-01
  - “ Material : Synthetic Rubber
  - “ Specifications:
    - Body : 250 x 350 x 50mm(Trapezium)
    - End cap : 170 x 350 x 50mm
  - “ Specialized designed, notable deceleration effect and without noise
  - “ High intensity synthetic rubber, durable and good anti-impact ability
  - “ Length layout flexibility to suit drive-way width, easy installation
  - “ Combination of Black and Yellow to attract drivers attention
  - “ Eliminate speeding to ensure safety
- **Usage:**  
*Both Indoor and Outdoor, Car Parks, Drive-Ways, Toll Plazas, anywhere where reduced vehicle speed is required.*

# Wheel Stopper



- “ Model : TSIE-WS-01
- “ Material : Synthetic Rubber
- “ Specifications:  
Size : 500mm x 160mm x 100mm
- “ High intensity synthetic rubber, durable and attractive
- “ Easy installation
- “ Black and Yellow in colour to effectively attract the attention of driver
- “ Widely used in parking lots to protect both car and wall, in addition to car positioning

## **Product Description :**

- Rubber Car Wheel Stopper replaces the conventional concrete car wheel stopper.
- It is easily fixed and dismantled conveniently as and when one required.
- High impact resistance Rubber Car Wheel Stoppers are designed to be cost effective and durable.

# Wheel Stopper



- “ Model : TSIE-WS-02
- “ Material : Natural Rubber
- “ Specifications:  
Size : 600mm(L) x 130(H) x 100mm(W)
- “ High intensity natural rubber, durable and attractive
- “ Easy installation
- “ Black and Yellow in colour to effectively attract the attention of driver
- “ Widely used in parking lots to protect both car and wall, in addition to car positioning

## **Product Description :**

- Rubber Car Wheel Stopper replaces the conventional concrete car wheel stopper.
- It is easily fixed and dismantled conveniently as and when one required.
- High impact resistance Rubber Car Wheel Stoppers are designed to be cost effective and durable.

# Corner Guard

- “ Model : TSIE-CG-01
- “ Material : Synthetic Rubber
- “ Specifications:
  - Width : 100mm
  - Height : 800mm
  - Thickness : 10 mm



- “ Black rubber with yellow reflective film, it is very beautiful and easily attract the attention of driver in both day or night situation
- “ While protecting columns and walls, rubber also reduces damage to cars should any impact occurs
- “ Installation is easy, and the product is durable.

## Product Description:

It is an ideal material for protection as compared to conventional way of using **Mild Steel Angle**, which rust easily and requires maintenance.

Rubber Corner Guard withstand abrasion, weather resistance provides replaceable, scratch resistant surface for wall corners along corridors, columns susceptible to damages. Rubber Corner Guard cushions impact having absorption properties reacting in such instances.

## ➤ Usage:

*Mainly used for heavy traffic area, parking lot, hypermarket, trolley traffic area, loading bay, warehouse, factory and etc.*

# Industrial Guard

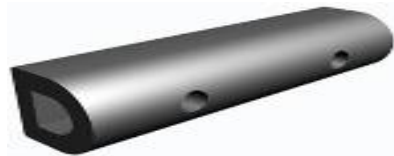
IRB Bumper Guard



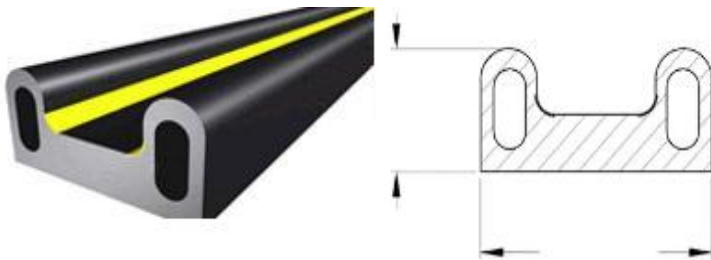
IBG Bumper Guard



D Fender Bumper Guard



Wall Fender (Light Duty)



Material Available :  
*Thermo Rubber, PVC and TPE*

*Size and Color Available on Request*

## Product Description :

- Economical
- Fast Delivery
- Easy Installation
- Reliable Performance
- Multi Usage
- Withstand corrosion when exposed to normal environmental condition.

*These Wall Fender are available in wider variety of sizes making suitable for use on boat, marine, warehouse, factory, loading bays, ramp, heavy commercial traffic and etc.*